

## Certificate of Analysis

### LudgerPure™ APTS Labeled NA2F Glycan

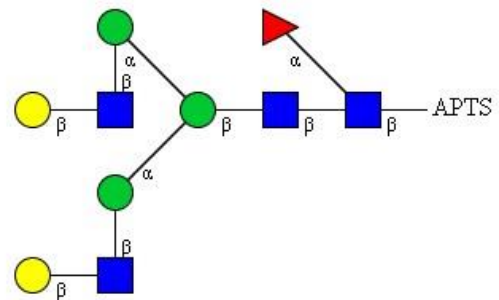
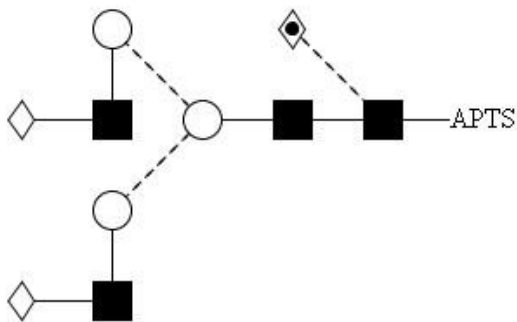
Cat. #: CAPTS-NA2F-01  
Size: ~ 20 pmol

Batch: B282-01  
Expiry: 13 Mar 2024

#### Alternative Names

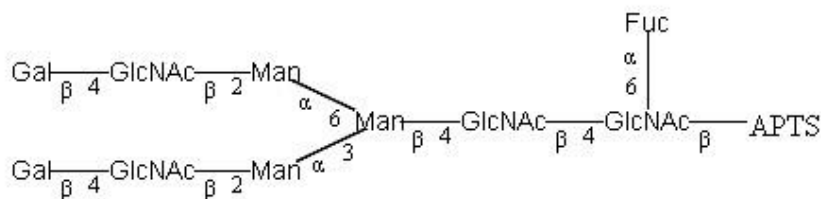
G2F – FA2G2

#### Structure



#### Oxford Notation

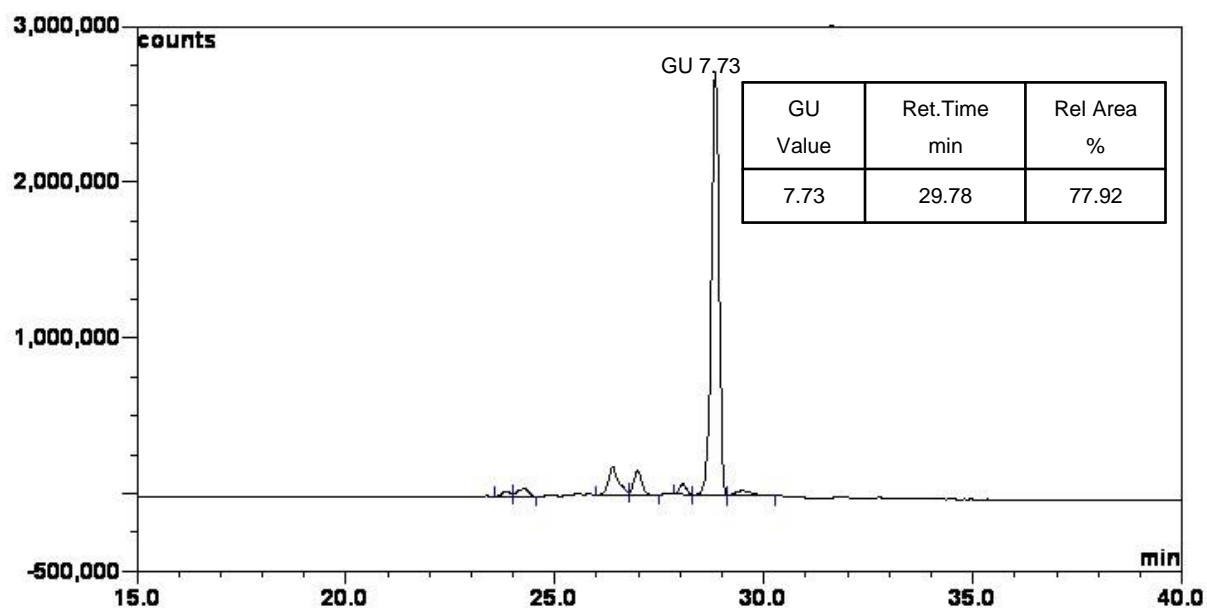
#### CFG Notation



#### Text Notation

{The Oxford Notation glycan structure is drawn according to the scheme developed by Oxford-Dublin Glycobiology Laboratory (see Fig 2)}.

**Purity:** >75.00% APTS labelled NA2F glycan, as assessed by uHPLC - see Fig 1.



**Figure 1: BEH uHPLC profile of APTS Labelled NA2F Glycan (Cat. #: CAPTS-NA2F-01, Batch # B282-01).**

NA2F glycan structure identified by uHPLC. (GU value obtained from running internal GHP labelled with APTS).

The APTS labelled NA2F glycan peak (figure 1) eluted at 29.78 minutes under the following uHPLC conditions:

Column: Waters BEH UPLC column, 1.7 µM

Flow: 0.5 ml/min

Temperature: 60 °C

Solvent A: 50 mM Ammonium formate pH 4.4

Solvent B: 100 % Acetonitrile

Gradient:

- 0 min - 78 % B
- 38.5 min – 55.9 % B
- 40.5 min - 0 % B
- 42.5 min - 0 % B
- 44.5 min - 78 % B
- 55 min - 78 % B

Detector: Ultimate 3000

Excitation wavelength: 448 nm

Emission wavelength: 510 nm

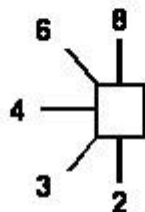
*Symbol for sugar*

- Glc
- GlcNAc
- ★ NeuNAc
- ◇ Gal
- ◆ GalNAc
- ◊ Fuc (deoxy galactose)
- Man
- △ Xylose

*Fluorescent label*

— APTS 8-Aminopyrene-1,3,6-trisulfonic acid

*Linkage position*



*Linkage type*

- β-linkage
- ..... α-linkage
- ~ unknown β-linkage
- ~ unknown α-linkage

Figure 2: GlycoBase glycan structure key.